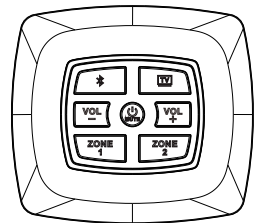


iRV Technologies

Operation Manual

BT / HDMI ARC Digital stereo amplifier



iRVRM2



WARNING-To reduce the risk of electrical shock, do not remove cover (or open unit). **NO USER SERVICEABLE parts** are inside. Refer servicing to **QUALIFIED SERVICE PERSONNEL**.

The design and manufacture of this player takes personal safety into consideration. However, any improper operation may result in electric shock, fire, or other hazard.

DO NOT open the cabinet by yourself to prevent electric shock. Please contact a professional technician to preform any service needed. Please use only components recommended by factory when replacement is necessary.

Please turn unit off when not in use. Use a dry, soft cloth to clean face with the system turned off.

iRVRM2 Technologies

BT

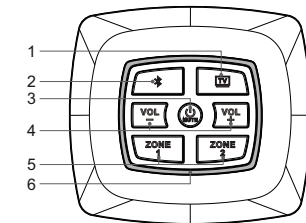
This unit contains BT technology enabling secure, wireless connections between portable and fixed devices.

HDMI ARC

ARC function does not support Dolby decoding. When your TV is set to Dolby output, there will be no sound. When your TV is set to digital audio output, it must be set to any non-Dolby output, such as "PCM".

This unit supplies quality high power audio outputs to two different zones. Zone 1 and Zone 2 receive standard stereo audio.

iRVRM2 Features



1 HDMI ARC

In non-HDMI ARC mode, press this button to enter HDMI ARC mode quickly.

2 BT

In non-BT mode, press this button to enter BT mode quickly. The button light turns red, indicates that BT is not paired. The button light turns blue, indicates that BT is paired.

3 POWER / MUTE

In standby mode, press this button to turn the unit ON. In normal mode, press this button to make the unit mute. Press and hold this button to turn the unit OFF.

iRVRM2 Features

4 VOLUME /

VOL- Press this button to decrease the volume. VOL+ Press this button to increase the volume.

5 ZONE /


Turns sound ON or OFF in corresponding ZONE 1, 2. The button light turns red, indicates that BT is not paired. The button light turns blue, indicates that BT is paired.

6 Mode indicator ring

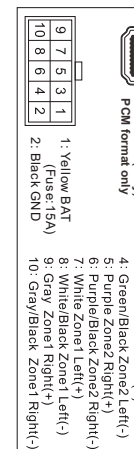
- Bright blue, it's in BT mode.
- Bright green, it's in HDMI ARC mode.
- Bright red, indicates that it has been muted.
- If adjust the volume,

When increase the volume, it will get brighter, and flash 3 times at the Max volume. When decrease the volume, it will get darker, and turns red at the Min volume.

BT link

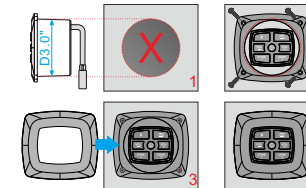
Turn on iRVRM2 power, enter BT Link in your cell. Search "iRVRM2" BT, then click connect. It's successful to connect iRVRM2 BT if  button turns blue.

iRVRM2 Wiring Diagram



INSTALLATION REQUIREMENTS

- Make a 3-inch circular hole on a flat surface. The maximum depth is about 3 inches, including standard HDMI plugs.
- Insert the power cord and HDMI cable into the open hole, and then tighten 4 screws with a diameter of 3mm.
- Take out the decorative trim again, align it directly with the unit and press a little hard. It will be installed when hear a popping sound, and install it with the surface shell.



5. Remove the decorative trim

There are small grooves on the upper and lower sides of the decorative trim. Use a flat screwdriver to insert it and pry it outward a little hard to remove the decorative trim.



iRVRM2 Specifications

Overall Dimensions	4"(W) x 3-5/8"(H) x 2-1/8"(D)
Mounting Dimensions	4-3/8"(W) x 4"(H) x 3"(D)
Net Weight	0.44lbs (0.20kgs)
Voltage	11.0V-15V DC Negative Ground
Maximum Current Consumption	10A
Total Continuous Power Output	100W
Lotal Impedance	4Ω(4-8Ωallowable)
Total harmonic distortion	Typical 0.02% Maximum 0.3%
Bluetooth	Version 5.0, Class II
Advanced Audio Distribution	A2DP, AVRCP